



STELLA BLUFFS

Morristown Road
Stella, NC 28582
910-714-5611

wilmingtoninfo@drhorton.com



Welcome to Stella Bluffs, a new home community in the city of Stella. This community is offering 3 floorplans that range from single-story to two-story with 3 to 4 bedrooms, up to 3 bathrooms, and 2-car garages.

As you step inside, you'll immediately notice the attention to detail and high-quality finishes throughout. The kitchen boasts beautiful cabinets, laminate countertops, and stainless-steel appliances, making it a chef's dream. The LED lighting adds a modern touch and creates a warm ambiance.

Stella Bluffs offers spacious layout, modern features, and nice location, Stella Bluffs is truly a gem. Don't miss out on the opportunity to make it your own.

D·R·HORTON®
America's Builder



drhorton.com/wilmington

D.R. Horton is an Equal Housing Opportunity Builder. Home and community information, including pricing, included features, terms, availability and amenities, are subject to change and prior sale at any time without notice or obligation. Pictures, photographs, colors, features, and sizes are for illustration purposes only and will vary from the homes as built. Square footage dimensions are approximate. Buyer should conduct his or her own investigation of the present and future availability of school districts and school assignments. All homes constructed by D.R. Horton, Inc. License #29676.

The Kerry

3 Bedroom, 2 Bathroom

2-Car garage | 1,475 sq ft



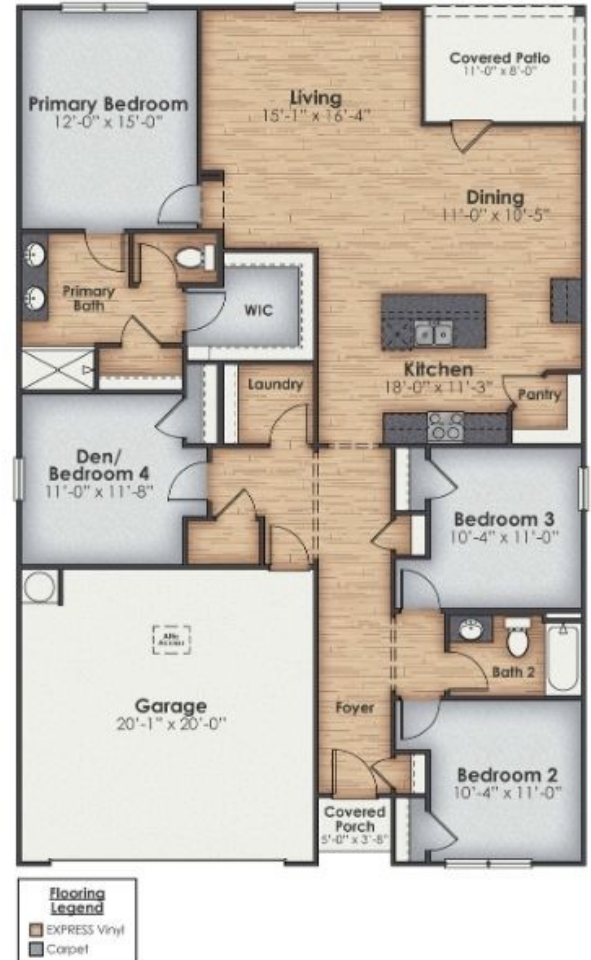
Kerry B



Kerry E



Cali C



All of our homes include D.R. Horton's Home is Connected package, in industry leading suite is smart home products that keeps homeowners connected with the people and place they value the most. The technology allows homeowners to monitor and control their home from the couch or across the globe. Control the thermostat, front door light and lock, and video doorbell from your smartphone or with voice commands to Alexa!

The Cali

4 Bedroom, 2 Bathroom
2-Car garage | 1,774 sq ft

The Galen

4 Bedroom, 2.5 Bathroom
2-Car garage | 2,340 sq ft



Cali S



Galen B



Galen C



D.R. Horton is an equal housing opportunity builder. Home and community information, including pricing, included features, terms, availability and amenities, are subject to change and prior sale at any time without notice or obligation. Pictures, photographs, features, colors and sizes are approximate for illustration purposes only and will vary from the homes as built. All homes constructed by D.R. Horton, Inc. License #29676.

Areas of Interest



Situated just off 24 South towards Swansboro. Emerald Isle is just a short drive away, providing more options for beaches, dining and entertainment.

Homesites



Map is for representation purposes only. Not drawn to scale.

Stella Bluffs

Architectural Artistry

- Architectural shingles with 30-year warranty
- Insulated Therma-Tru® fiberglass entry door
- Low maintenance aluminum wrapped cornice and vinyl soffit
- Wood grain vinyl siding
- 2 freeze resistant hose bibs
- 2 weatherproof electrical outlets
- Engineered and reinforced concrete foundation with wire mesh
- Attic Access per plan
- 8 x 10 patio or covered porch per plan

Landscaping Elements

- Professionally designed landscape package
- Sodded front yard and disturbed areas of backyard

Heart of the Home

- Low maintenance pattern flooring throughout 1st floor including 1st floor bedrooms
- Mohawk® vinyl flooring in foyer, kitchen, family room, all bathrooms, first floor bedrooms and laundry room per plan
- Mohawk® Stain resistant carpet with 6 lb rebond pad in 2nd floor bedrooms, stairs and 2nd floor hallway
- Sherwin Williams® paint throughout
- Smooth ceilings throughout
- Colonial 2 panel interior doors with satin nickel hardware
- Modern LED Diverse lighting throughout

A Gourmet's Delight

- Single bowl stainless steel kitchen sink with single lever chrome faucet
- Stainless steel free-standing electric range
- Stainless steel 4 cycle dura wash dishwasher
- Stainless steel microwave
- Counter height kitchen island (per plan) with maple cabinets in select finishes

Bathroom Conveniences

- Laminate bath vanity tops with porcelain sink (per plan)
- Dual vanities in primary bath
- Pedestal sink in powder room
- Moen® chrome faucets
- 5' shower in primary bath with
- Linen closet per plan
- Gerber® water saving, elongated toilets

Thoughtful Details

- Energy saving insulation package
- Quality Kingspan® house wrap
- 50 gallon high-efficiency electric water heater per plan
- 14-SEER heat pump with digital, programmable thermostat
- Low E energy efficient insulated vinyl windows
- Ventilated shelving systems
- Garage Door motor and remotes

Technology Standard

- Phone location in Kitchen
- Cable outlets in Family Room and Primary Bedroom
- Pre-wired for ceiling fans in living room and all bedrooms

Home is ConnectedSM

- Alexa® Voice Control: (1) Amazon Echo Pop
- Front Door Bell: Skybell® video doorbell + App control
- Home Hub: Qolsys® IQ2 touchscreen panel + App control
- Light Switch: Front exterior light + App control
- Thermostat: Honeywell® T6 Pro + App control
- Door Lock: Quickset Smartcode 888keyless entry pad

Safe and Secure

- Deadbolts on front door with satin nickel hardware
- GFI outlets located in kitchen, baths, garage and exterior per plan
- 1 exterior carriage light

D.R. Horton's Personal Touch

- Ask about closing cost assistance with use of DHI Mortgage and preferred attorney**
- 1 year builder warranty from D.R. Horton
- 10 year RWC limited structural warranty
- Pre-construction meeting with onsite team
- Pre-close walkthrough and new home orientation
- Informative "Foundations" guide to home ownership and warranty services

drhorton.com/wilmington



Home and community information, including pricing, included features, terms, availability and amenities, are subject to change and prior sale at any time without notice or obligation. **Not all buyers will qualify. This flyer is for information purposes only and is not part of a legal contract.